

TTSH DM Toolkit

WHAT IS THE DM KIT?

A simple, clinic-ready kit to help non-Endocrine SOC's confidently start GLP1-RA and insulin, refer to same-day DNE and DFS — leading to real, measurable impact. It's called the **DM Bag**

WHO CAN USE IT?

- Non-endocrinology Specialists in Tertiary Care
- Polyclinic Family Physicians (*Adapted)
- Private General Practitioners (*Adapted)



OUTCOMES


Effective in improving HbA1c and provider behaviour:

- HbA1c: **↓ from 10.0% to 9.1%**
- Provider Behaviour:
 - GLP1-RA Prescriptions: **↑ 51.7%**
 - Insulin (Glargine) Orders: **↑ 13.3%**


(Based on Mar 24 to Feb 25 results)

WHAT IS IN THE DM KIT


The DM Bag is a kit that contains the following:



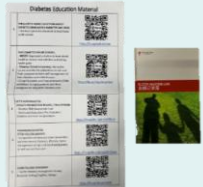
Laminated referral pathways, insulin/GLP1-RA quick guides




Ready referral workflows for same-day DNE and APN support



Demo kits (e.g., Trulicity, Humalog, Lantus)

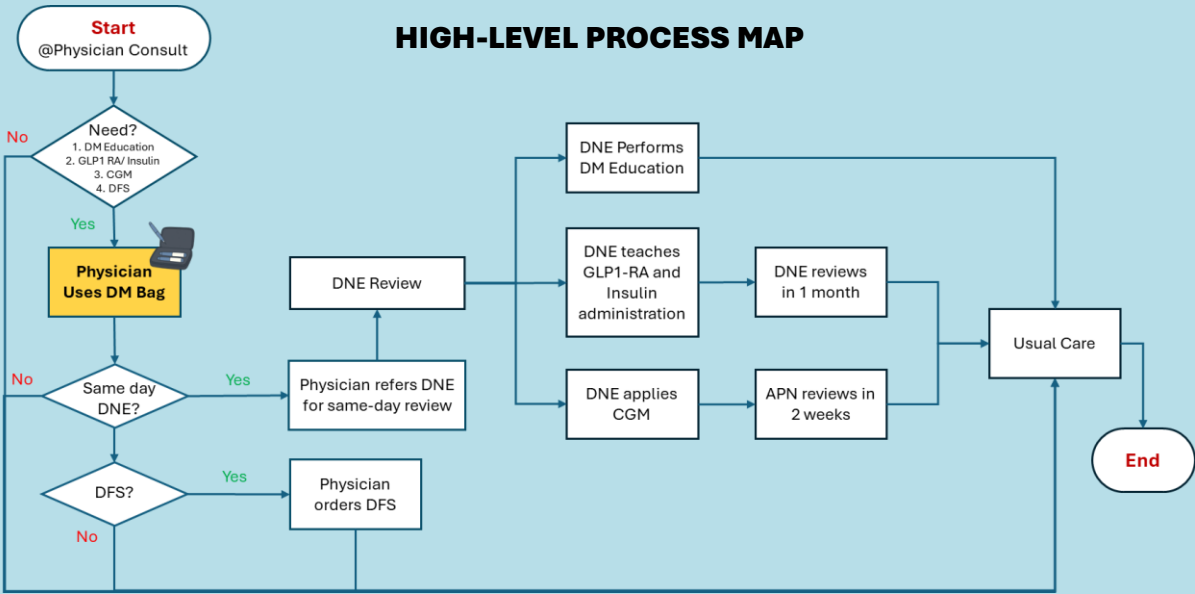


QR-code consolidated Patient education leaflets



Blood glucose logbooks + SMBG starter packs (optional)

HIGH-LEVEL PROCESS MAP



VOICES FROM THE GROUND



“At least we have your (“DM Kit”) now. I used to really hate initiating insulin in clinic and didn’t even know if I was teaching the right things”.

Ready to Adopt the DM Bag in Your Clinic? We’ve done the testing. You can plug and play.



Contact us for more information:
[Endocrinology - Tan Tock Seng Hospital](#)